



BELMONT

RESIDENCES

The background of the image is a soft-focus photograph of a tropical interior. On the left, there are large, dark silhouettes of palm fronds and other tropical plants. To the right, a large window with light-colored, vertically pleated curtains allows bright, natural light to fill the space, creating a warm and airy atmosphere. The overall color palette is muted, with greys, whites, and soft greens.

ELEVATED MODERN LIVING
IN A VIBRANT
FAMILY COMMUNITY

JUMEIRAH VILLAGE TRIANGLE

A distinctive family-friendly community surrounded by lush landscaped communal areas and parks, Jumeirah Village Triangle is home to a several mixes of villas, townhouses and apartments with a thoughtful selection of entertainment and leisure options ideal for families and small communities.

Located in District 4 of Jumeirah Village Triangle, Belmont Residences is strategically located close to major highways, community parks and International Schools, yet away from the hustle and bustle of the city.

- 01 Belmont Residences
- 02 Community Parks
- 03 JVT Water Fountain
- 04 Arcadia School
- 05 JVT Pond
- 06 Soccer Field
- 07 Basketball Courts
- 08 Basketball Pitch
- 09 Tennis Courts
- 10 Sunmarke School
- 11 Supermarket
- 12 Al Khail Avenue Mall
- 13 Dog Park



B E L M O N T
R E S I D E N C E S

BELMONT

RESIDENCES

Inspired by the metropolitan city of London with its modern design anchored with classic details, Belmont Residences blends well with its natural surroundings. A refined, elegant and thoughtfully designed contemporary residential development of 68 studios and apartments that are spacious and warmly intimate. Complemented with a mix of family-centered amenities that will upgrade residents' lifestyles, featuring a central courtyard, resort-inspired pool deck and an activity wall.



LOCATION

Jumeirah Village Triangle

BUILDING CONFIGURATION

Ground Floor

Podium Floor

5 Residential Floors

UNIT TYPES

Studios, 1 bedroom and 2
bedroom apartments

OWNERSHIP

Freehold



PARKING

1 parking space per apartment

ELEVATORS

1 passenger elevator

1 service elevator

ANTICIPATED COMPLETION DATE

Q4 2024

ANTICIPATED SERVICE CHARGE

AED 14 per sq.ft



SIZE RANGE PER
UNIT TYPE

Studio

From 414 sq. ft to 654 sq. ft.

1 Bedroom

From 739 sq. ft to 973 sq. ft.

2 Bedrooms

From 1,142 sq. ft to 1,534 sq. ft.

APARTMENT
PRICES

Studio

615,828 to 997,828

1 Bedroom

1,019,828 to 1,248,828

2 Bedrooms

1,423,828 to 1,882,828

NUMBER OF
UNITS PER TYPE

Studio = 10 units

1 bedroom = 29 units

2 bedrooms = 29 units



GROUND FLOOR
AMENITIES PLAN

- 01 MAIN ENTRANCE
- 02 LOBBY RECEPTION
- 03 COMMUNAL TABLE
- 04 LOUNGE AREA
- 05 LIBRARY WALL
- 06 READING NOOK
- 07 LIFT LOBBY
- 08 EV CHARGING STATION
- 09 BICYCLE PARKING WITH MAINTENANCE STAND
- 10 PARKING FOR PEOPLE OF DETERMINATION



FIRST FLOOR
AMENITIES PLAN

- 01 LAP POOL
- 02 WATER FEATURE
- 03 POOL SUN LOUNGERS
- 04 OUTDOOR SHOWER
- 05 ACTIVITY WALL AREA
- 06 OUTDOOR KIDS' PLAY AREA
- 07 KIDS' CLIMBING WALL
- 08 ADULT CLIMBING WALL
- 09 OUTDOOR FITNESS AREA
- 10 INDOOR FITNESS STUDIO
- 11 YOGA AREA
- 12 MALE CHANGING ROOM WITH STEAM & SHOWER
- 13 FEMALE CHANGING ROOM WITH STEAM & SHOWER
- 14 INDOOR KIDS' PLAY AREA
- 15 COURTYARD
- 16 BATHROOM FOR PEOPLE OF DETERMINATION





ELLINGTON
PROPERTIES

BELMONT
RESIDENCES

A WARM WELCOME



COZY INVITING SETTING



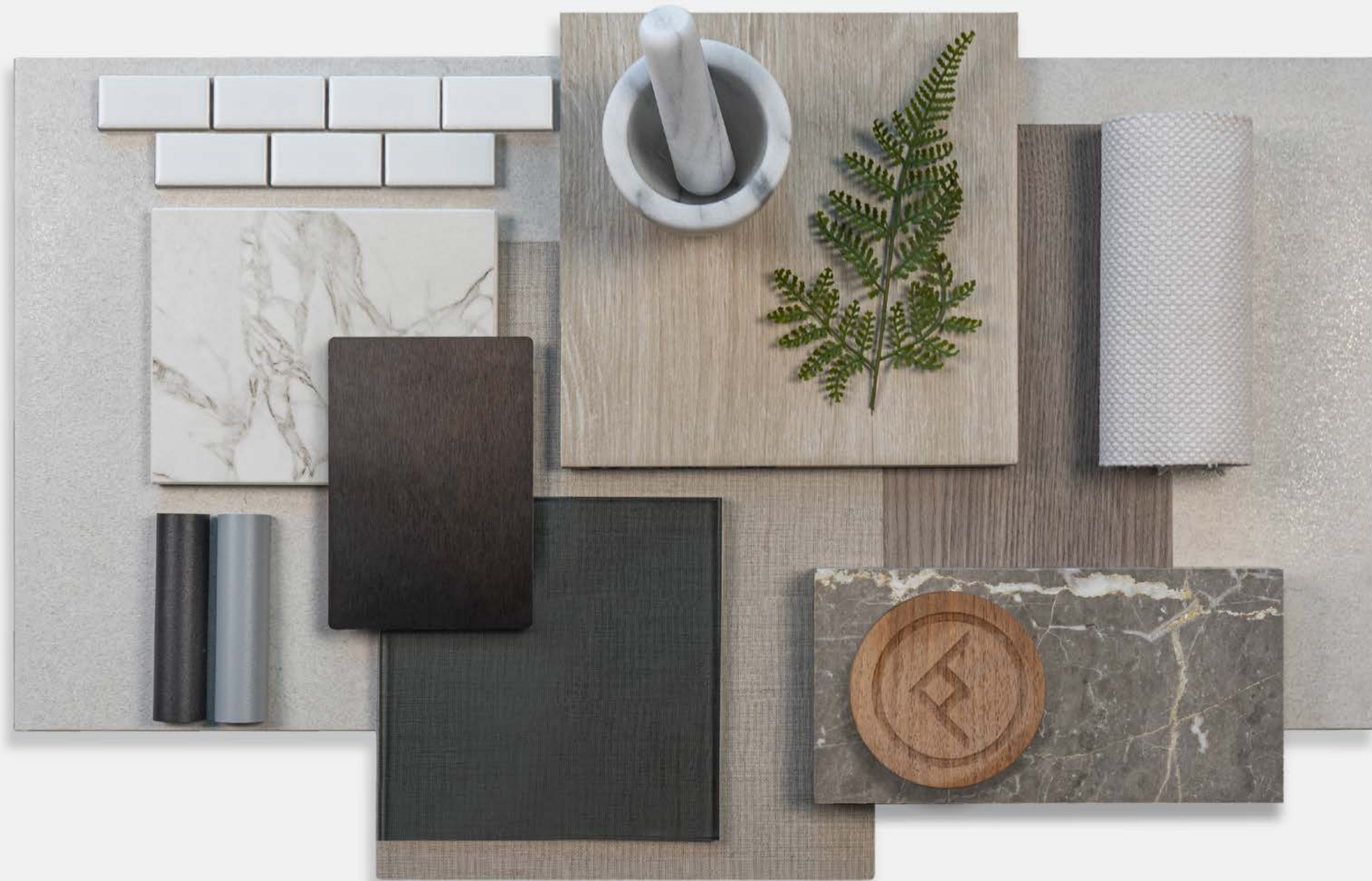


A DYNAMIC *LIFESTYLE*



WHERE IMAGINATION STARTS

*A WARM AND ELEGANT
BACKDROP*





UNINTERRUPTED MOMENTS



A MODERN CULINARY *EXPERIENCE*



DESIGNED WITH *REST & RELAXATION* IN MIND

A SPA-LIKE *AMBIENCE*



TYPICAL PLAN

1ST FLOOR PLAN



STUDIOS



1 BEDROOM
APARTMENTS



2 BEDROOM
APARTMENTS

TYPICAL PLAN

2ND - 5TH FLOOR PLAN



STUDIOS

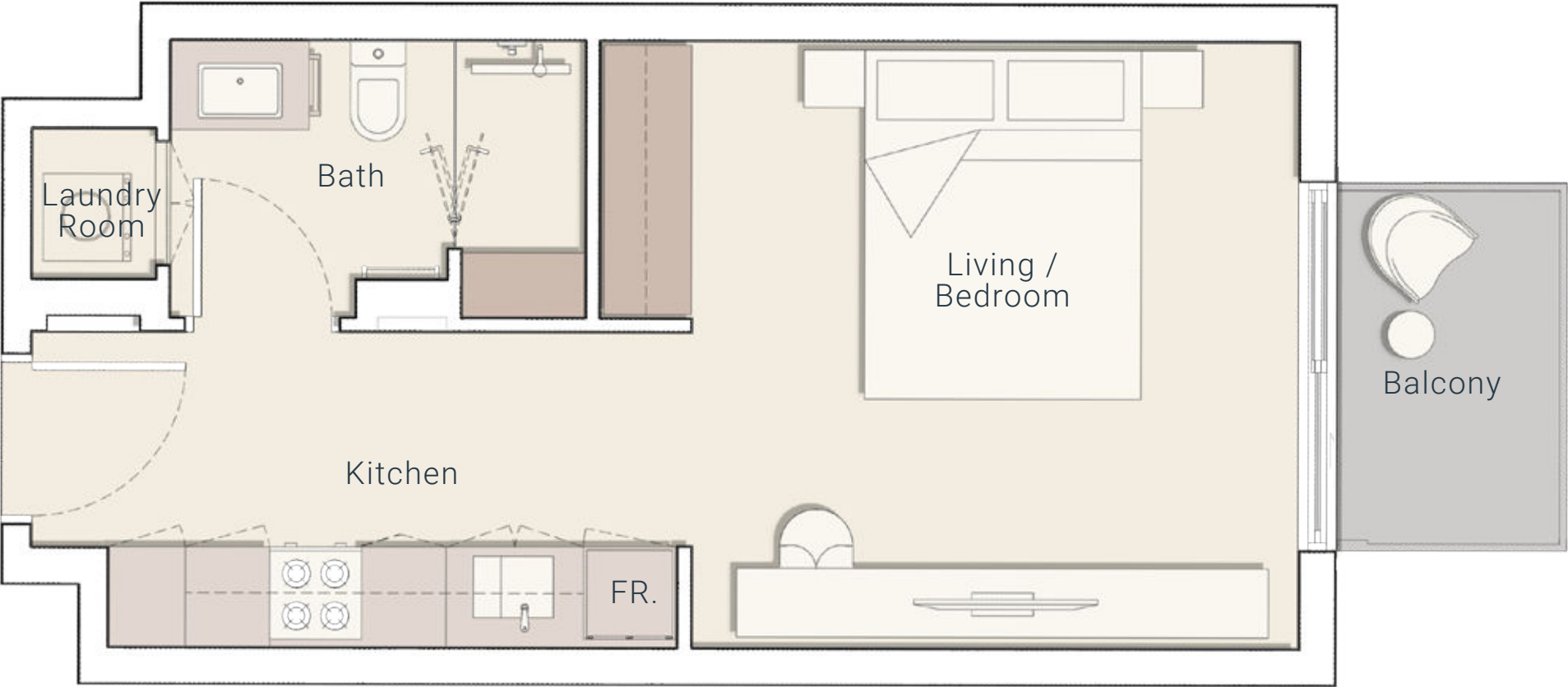


1 BEDROOM
APARTMENTS



2 BEDROOM
APARTMENTS

FLOOR PLAN



STUDIO TYPE A



STUDIO TYPE B



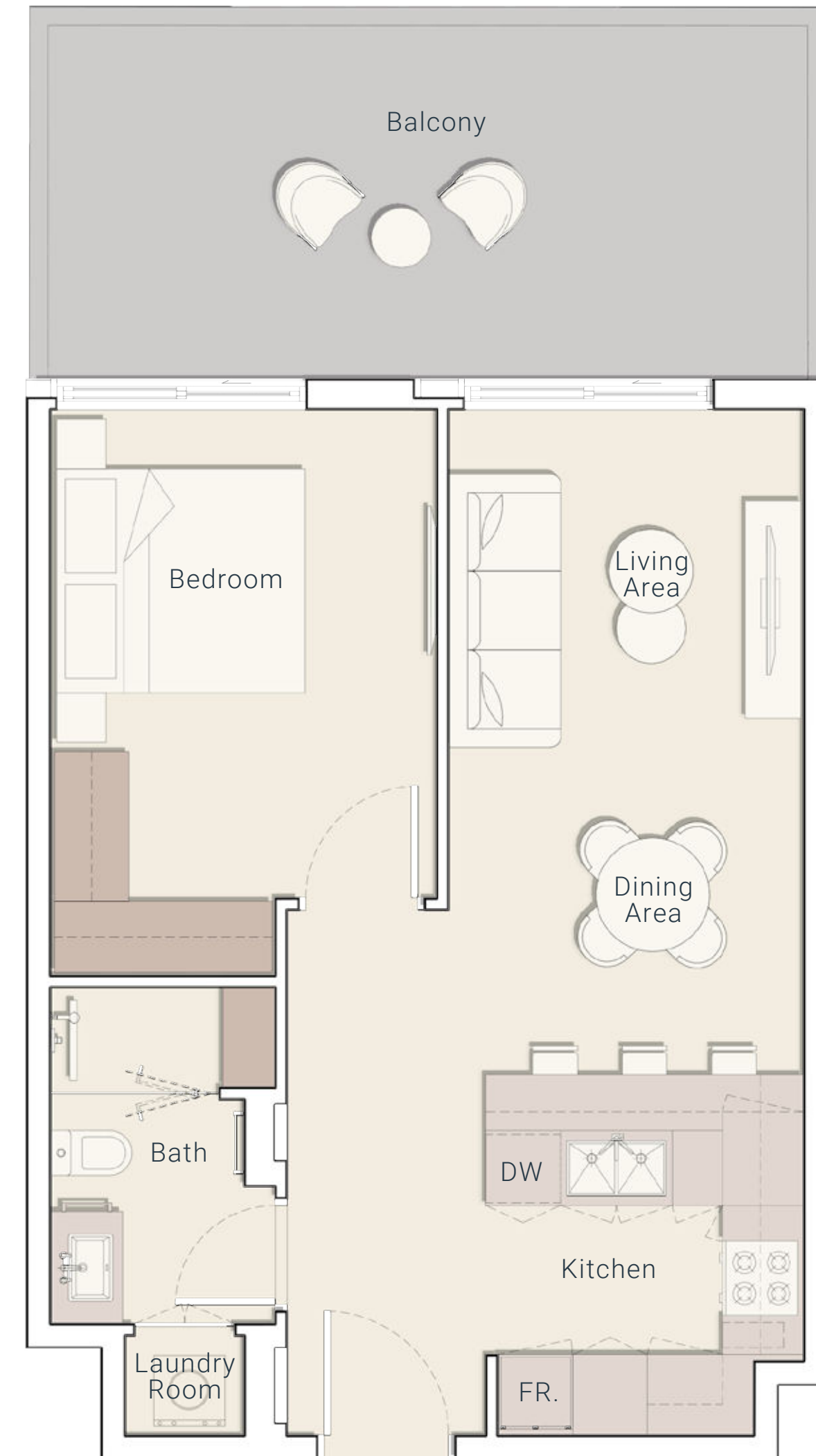
1 BEDROOM *TYPE A*



1 BEDROOM *TYPE B*



1 BEDROOM *TYPE B*



1 BEDROOM *TYPE C*



2 BEDROOM *TYPE A*



2 BEDROOM *TYPE B*



2 BEDROOM *TYPE B*



2 BEDROOM *TYPE C*



2 BEDROOM *TYPE D*



2 BEDROOM *TYPE D - TERRACE*

PAYMENT *PLAN*

20%

At the time
of booking

10%

60 days after
the reservation

10%

120 days after
the reservation date

5%

On completion of 20%
construction of the project

5%

On completion of 30%
construction of the project

5%

On completion of 40%
construction of the project

5%

On completion of 50%
construction of the project

5%

On completion of 60%
construction of the project

5%

On completion of 70%
construction of the project

30%

On completion



CONTACT US

 +971 4 248 3400 |  +971 55 162 3236

Email Us

info@tanamiproperties.ae

For More Info...

www.tanamiproperties.com/Projects/Belmont-Residences



ADDRESS

Office 3405, Marina Plaza,
Al Marsa Street, Dubai Marina, UAE